



PROPOSED PRIMHD OUTCOME REPORTS

DRAFT CONSULTATION DOCUMENT

OCTOBER 2008

TABLE OF CONTENT

LIST OF TABLES	3
LIST OF FIGURES	4
PURPOSE.....	5
BACKGROUND.....	5
QUESTIONS.....	5
OUTCOME COMPLIANCE REPORTS	7
1. <i>Collection Compliance/Participation Rates by Team</i>	7
2. <i>Valid Collection – with maximum 2 Items missing (coded 7 or 9)</i>	7
3. <i>Frequency of Items with missing data (coded 7 or 9)</i>	8
AGGREGATED OUTCOMES REPORTS	10
1. <i>HoNOS/HoNOS65+/HoNOSCA Total Scores</i>	10
2. <i>Number of Clinically Significant Items</i>	15
3. <i>Percentage with any item Clinically Significant for the five sub-scores</i>	19
4. <i>Percentage Clinically Significant by Item</i>	23
5. <i>Index of Severity</i>	28

LIST OF TABLES

Table 1: Collection Compliance/Participation Rates by Team, DHB.....	7
Table 2: The validity of HoNOSCA collection, selected DHBs	8
Table 3: The validity of HoNOSCA collection by Team, DHBs.....	8
Table 4: Frequency of Items with missing Data by Reason for Collection and Setting, DHB	9
Table 5: Frequency of Items with missing Data by Team, DHB	9
Table 6: HoNOS Total Score 12 items, by Reason for Collection and Setting, Selected DHBs	11
Table 7: HoNOS Total Score 12 items at Admission by Team, DHB.....	13
Table 8: HoNOS Total Score 12 items at Admission, by Ethnicity and Setting, Selected DHBs.....	13
Table 9: Mean Number of Clinically Significant ¹ Items, by Reason for Collection and Setting, HoNOS, Selected DHBs	15
Table 10: Average Number of Clinically Significant ¹ items by Team, HoNOS, DHB	17
Table 11: Mean Number of Clinically Significant ¹ items at Admission, by Ethnicity and Setting, HoNOS, Selected DHBs	17
Table 12: Percentage with any item Clinically Significant ¹ for the five sub-scores, by Reason for Collection and Setting, HoNOS, Selected DHBs	20
Table 13: Table: Percentage with any item Clinically Significant ¹ for the five sub-scores at admission, by Team, HoNOS, DHBs.....	21
Table 14: Percentage with any item Clinically Significant ¹ for the five sub-scores at admission, by Ethnicity and Setting, HoNOS, Selected DHBs	22
Table 15: Percentage of Service Users with a Clinically Significant ¹ item of HoNOS, by Reason for Collection and Setting, HoNOS, Selected DHBs	24
Table 16: Percentage of Service Users with a Clinically Significant ¹ item of HoNOS at admission, by Team, HoNOS, DHBs.....	25
Table 17: Percentage of Service Users with a Clinically Significant ¹ item of HoNOS at admission, by Ethnicity and Setting, HoNOS, Selected DHBs	26
Table 18: Distribution of Index of Severity, by Reason for Collection and Setting, HoNOS, Selected DHBs.....	29
Table 19: Distribution of Index of Severity, by Team, HoNOS, DHBs.....	30
Table 20: Distribution of Index of Severity, by Ethnicity and Setting, HoNOS, Selected DHBs.....	31

LIST OF FIGURES

Figure 1: HoNOS Total Score 12 items, by Reason for Collection and Setting, Selected DHBs..... 12

Figure 2: HoNOS Total Score 12 items at Admission, by Ethnicity and Setting, Selected DHBs 14

Figure 3: Mean Number of Clinically Significant¹ Items, by Reason for Collection and Setting, HoNOS, Selected DHBs
..... 16

Figure 4: Mean Number of Clinically Significant¹ items at Admission, by Ethnicity and Setting, HoNOS, Selected DHBs
..... 18

Figure 5: Percentage with any item Clinically Significant¹ for the five sub-scores, by Admission Status and Setting,
HoNOS, Selected DHBs 21

Figure 6: Percentage with any item Clinically Significant¹ for the five sub-scores at admission, by Ethnicity and Setting,
HoNOS, Selected DHBs 23

Figure 7: Percentage of Service Users with a Clinically Significant¹ item for each item, by Admission Status and Setting,
HoNOS, Selected DHBs 27

Figure 8: Percentage of Service Users with a Clinically Significant¹ item for each item for Admission, by Ethnicity and
Setting, HoNOS, Selected DHBs 28

Figure 9: Distribution of Index of Severity, by Reason for Collection and Setting, HoNOS, Selected DHBs 30

Figure 10: Distribution of Index of Severity, by Ethnicity and Setting, HoNOS, Selected DHBs 32

PURPOSE

Te Pou is in the process of putting recommendations to the Ministry of Health regarding a standard set of outcomes reports to accompany activity reporting from PRIMHD. This is an initial set which could be implemented at DHB level with a national comparison. The set includes compliance and aggregated outcome reports and is based on the existing (tried and tested) standard set of reports delivered to participating 'Test Project' DHBs. Not all of these will be put forward; some of this will depend on your feedback.

Below are a few questions which will help inform our recommendations to the MoH.

BACKGROUND

There will be an initial set of outcomes reports from PRIMHD which will be added to over time. The proposed initial set (the subject of this document) is designed to give a basic overview of the outcomes data. These include compliance reports and initial summary information in which an overview of the data could be obtained. Future reports will use matched pair data which will enable measurement of change over time. In time there will also be a casemix element added which will enable further analysis and/or comparisons to be made between services etc at casemix class level. Future developments are likely to include analysis of diagnosis and focus of care.

There will be sets of reports for each of the measures: HoNOS, HoNOS65+ and HoNOSCA.

Examples of tables and figures are presented here using data from the Test Project to give some indication of how the result will look where this can be done without compromising the confidentiality of the DHBs.

QUESTIONS

1. We present results showing HoNOS/HoNOS65+/HoNOSCA Total Score and Number of Clinically Significant items. Is it useful to have both the total and number of clinically significant items in reports, or, is there a preference of one over another?
2. Would you prefer to use 10 or 12 items in the Total Scores for HoNOS/HoNOS65+ and use 13 or 15 scores in the Total Scores for HoNOSCA?
 - As an alternative should both measures (number of items) be in the table and only one presented graphically?
 - The question of how many items also applies for Number of Clinically Significant items.

3. Of all the reports in this document which three would you find the most useful?
4. Do you have other ideas for useful reports to be considered in the next round of reports?

OUTCOME COMPLIANCE REPORTS

1. **Collection Compliance/Participation Rates by Team**
2. **Valid Collections - with maximum 2 Items missing (coded 7 or 9)**
3. **Frequency of Items with missing data (coded 7 or 9)**

These reports are designed to help improve the collection of outcomes data.

1. **Collection Compliance/Participation Rates by Team**

Rationale: This report will show if there is under-reporting of outcome collections based on reported activity and will hopefully encourage teams to improve their collection rates. The report needs to take into account teams not required to collect outcomes ie AOD. This report will initially be based on a combination of NHI, Referral ID and activity.

Table 1: Collection Compliance/Participation Rates by Team, DHB

Team	Number of service users with activity			Percentage
	At least one Outcome collection recorded	No Outcome collection	Total	No outcome collection
Team A				
Team B				
...				

Need further work in carefully defining how the above analysis is actually done.

2. **Valid Collection – with maximum 2 Items missing (coded 7 or 9)**

Rationale: This measures how well outcomes are collected when collection is done. Where collections are missing 2 or more items, these are excluded from aggregate analysis. Missing items may also affect an individual collection's ability to form part of an episode for matched pair or casemix analysis.

a) **by Reason for Collection and Service Setting**

Table 2: The validity of HoNOSCA collection, selected DHBs

Reason for Collection	Inpatient				Community			
	Valid ¹	Invalid ²	Total	% Invalid	Valid ¹	Invalid ²	Total	% Invalid
Admission - new referral for assessment only	7	0	7	0.0	344	36	380	9.5
Admission - new referral	111	7	118	5.9	3,225	151	3,376	4.5
Admission - admitted from other treatment setting	172	8	180	4.4	126	18	144	12.5
Admission - other	21	6	27	22.2	503	175	678	25.8
Review - 3-month review	7	0	7	0.0	3,614	177	3,791	4.7
Review - other	44	0	44	0.0	577	46	623	7.4
Discharge - no further care	11	2	13	15.4	1,909	556	2,465	22.6
Discharge - discharge to change of treatment setting	233	28	261	10.7	203	29	232	12.5
Discharge - lost to care	6	0	6	0.0	69	238	307	77.5
Discharge - discharge following brief episode of care	2	3	5	60.0	2	9	11	81.8
Discharge - other	12	0	12	0.0	134	104	238	43.7
Total	626	54	680	7.9	10,706	1,539	12,245	12.6

(1) 2 or less items of HoNOSCA are missing.

(2) 3 or more items of HoNOSCA are missing.

b) by Team (Specific for DHB)

Table 3: The validity of HoNOSCA collection by Team, DHBs

Team	Number of collections			% Invalid
	Valid ¹	Invalid ²	Total	
Team A				
Team B				
...				

(1) 2 or less items of HoNOSCA are missing.

(2) 3 or more items of HoNOSCA are missing.

3. Frequency of Items with missing data (coded 7 or 9)

Rationale: Identifies which individual items on the relevant scales were poorly collected so that strategies can be developed to remedy the situation.

a) by Reason for Collection and Setting

Table 4: Frequency of Items with missing Data by Reason for Collection and Setting, DHB

Reason for Collection	Number of Collections with item missing:											
	1	2	3	4	5	6	7	8	9	10	11	12
	Inpatient											
Admission - new referral ...												
	Community											
Assessment only ...												

b) by Team (Specific for DHB)

Table 5: Frequency of Items with missing Data by Team, DHB

Team	Number of Collections with item missing:											
	1	2	3	4	5	6	7	8	9	10	11	12
Team A												
Team B												
...												

AGGREGATED OUTCOMES REPORTS

1. **HoNOS/HoNOS65+/HoNOSCA Total Scores**
2. **Number of Clinically Significant Items**
3. **Percentage with any item Clinically Significant for the five sub-scores**
4. **Percentage Clinically Significant by item**
5. **Index of Severity**

Presenting results both in table form and graphically can be useful as some people find tables easier to read while others see results more clearly in a graph.

What the tables and graphs from PRIMHD will eventually look like will depend on the tools used by the MoH.

Note 1: Reports by Team and Ethnicity currently look only at results at *Admission*.

Note 2: The lines around the bars on the graphs are confidence intervals.

1. **HoNOS/HoNOS65+/HoNOSCA Total Scores**

Rationale: Total scores are a useful summarising mechanism at DHB and national levels, as they indicate trends. Total score has limited utility at the team level.

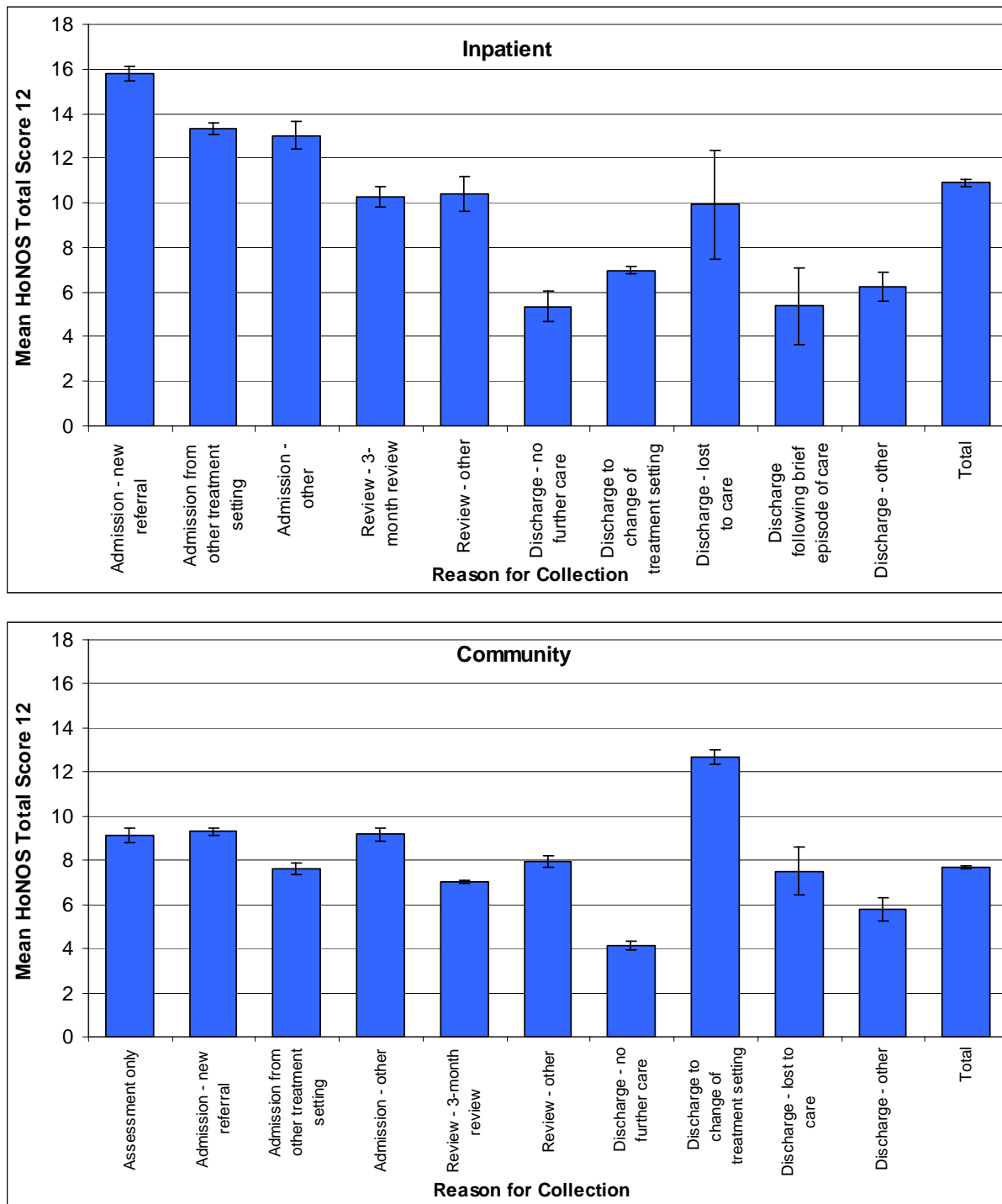
At this stage analysis covers all 12 or 15 items for HoNOS/HoNOS65+ or HoNOSCA respectively. This also could be done for 10 or 13 items respectively if this is deemed more appropriate.

a) by Reason for Collection and Service Setting

Table 6: HoNOS Total Score 12 items, by Reason for Collection and Setting, Selected DHBs

Reason for Collection	Inpatient			Community		
	Mean	N	Std. Deviation	Mean	N	Std. Deviation
Assessment only	15.3	26	7.3	9.1	1,843	6.1
Admission - new referral	15.8	2,261	6.5	9.3	4,878	5.5
Admission from other treatment setting	13.3	2,565	5.8	7.6	2,178	5.6
Admission - other	13.0	425	5.6	9.2	1,636	5.8
Review – 3-month review	10.3	850	5.9	7.0	19,572	5.1
Review - other	10.4	314	6.1	7.9	2,475	5.8
Discharge - no further care	5.4	227	4.6	4.1	2,131	4.1
Discharge to change of treatment setting	7.0	3,779	4.8	12.7	1,729	6.4
Discharge - lost to care	9.9	41	6.7	7.5	137	5.5
Death	19.0	1		13.0	4	16.1
Discharge following brief episode of care	5.4	38	4.6	6.3	18	8.3
Discharge - other	6.2	288	4.8	5.8	444	5.0
Total	10.9	10,815	6.7	7.7	37,045	5.6

Figure 1: HoNOS Total Score 12 items, by Reason for Collection and Setting, Selected DHBs



Note: when there is under 30 observations the data is excluded from this graph.

b) by Team at admission (Specific for DHB)

Table 7: HoNOS Total Score 12 items at Admission by Team, DHB

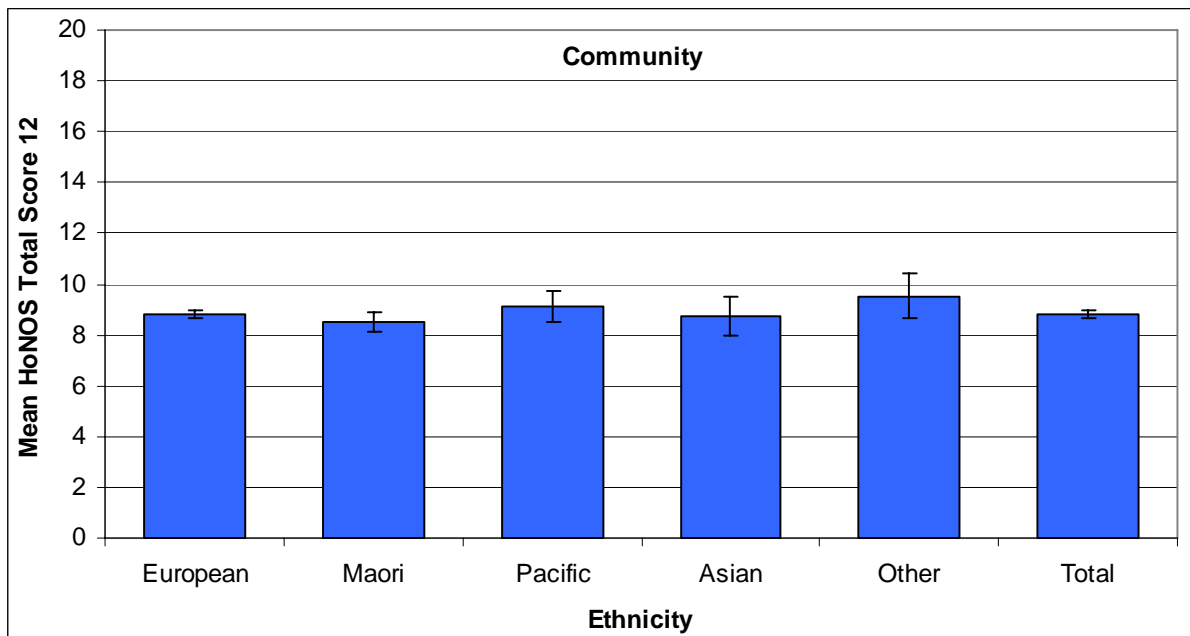
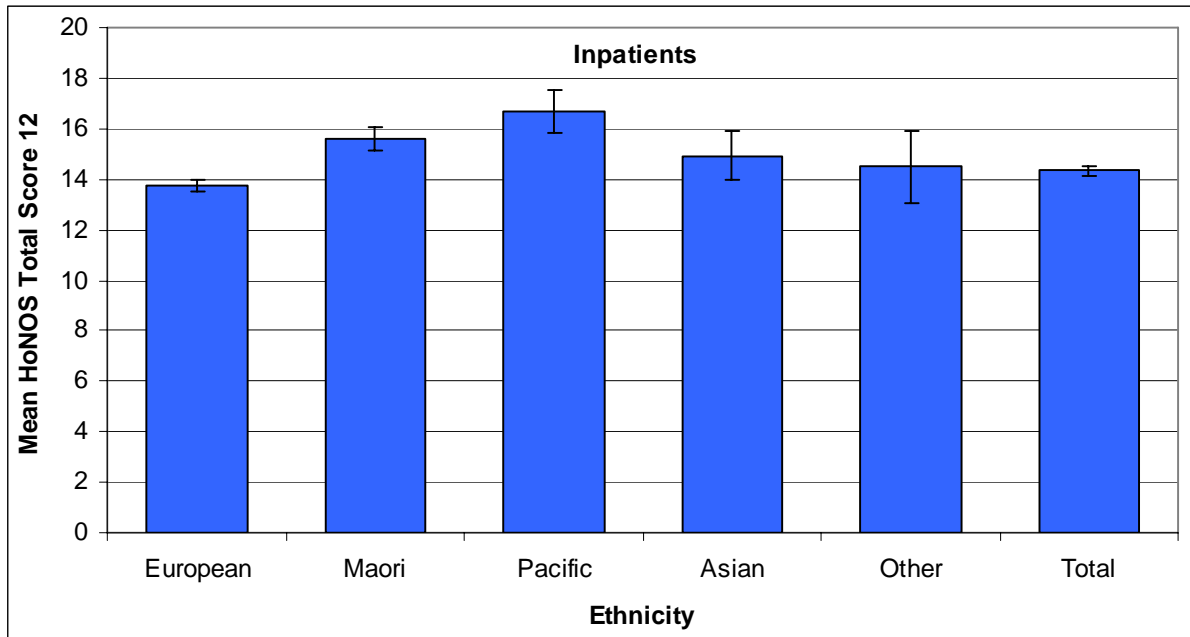
Team	Mean	N	Std. Deviation
Team A			
Team B			
Team C			
....			

c) by Ethnicity and Service Setting at Admission

Table 8: HoNOS Total Score 12 items at Admission, by Ethnicity and Setting, Selected DHBs

Ethnicity Grouped	Inpatient			Community		
	Mean	N	Std. Deviation	Mean	N	Std. Deviation
European	13.7	3,548	6.0	8.8	6,104	5.5
Maori	15.6	1,070	6.7	8.5	1,252	6.2
Pacific	16.7	311	6.6	9.1	470	6.2
Asian	14.9	158	5.4	8.7	277	5.6
Other	14.5	95	6.2	9.5	239	6.0
Total	14.3	5,182	6.2	8.8	8,342	5.7

Figure 2: HoNOS Total Score 12 items at Admission, by Ethnicity and Setting, Selected DHBs



2. Number of Clinically Significant Items

Clinically Significant	4	Severe to very severe problem	Most severe category. Must be recorded in clinical file and included in recovery plan. Note: problem can become more severe
	3	Moderate problem	Must be recorded in clinical file and included in recovery plan.
	2	Mild problem	Must be recorded in clinical file. May or may not be included in recovery plan.
Not Clinically Significant	1	Minor problem	Requires no formal action. May or may not be included in recovery plan.
	0	No problem	Problem not present

Rationale: A more clinically meaningful measure than Total score is to use the number of clinically significant items since these show where the treatment plans should be focused.

At this stage analysis covers all 12 or 15 items for HoNOS/HoNOS65+ or HoNOSCA respectively. This also could be done for 10 or 13 items respectively if this is deemed more appropriate.

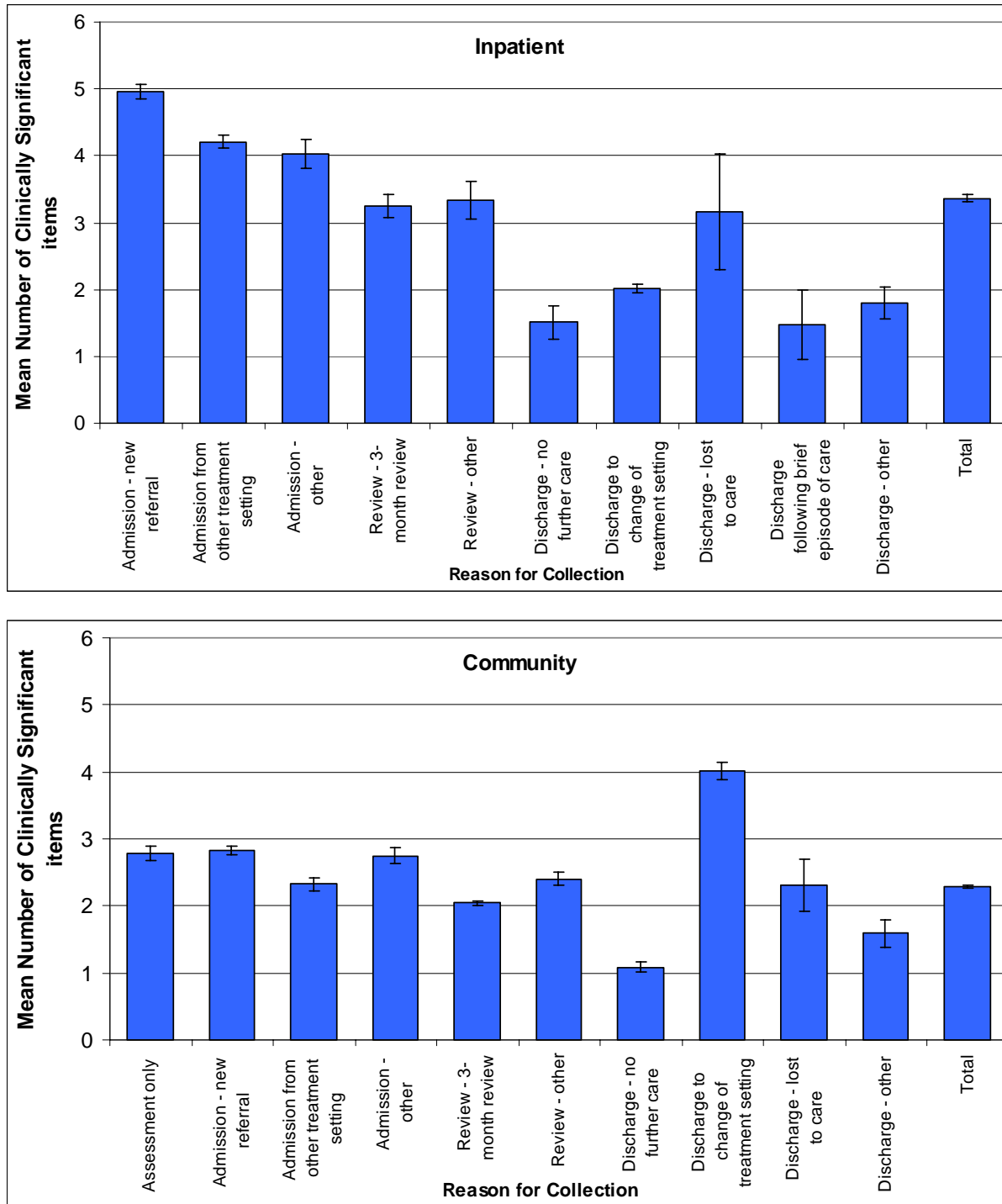
a) by Reason for Collection and Service Setting

Table 9: Mean Number of Clinically Significant¹ Items, by Reason for Collection and Setting, HoNOS, Selected DHBs

Reason for Collection	Inpatient			Community		
	Mean	N	Std. Deviation	Mean	N	Std. Deviation
Assessment only	4.8	26	2.2	2.8	1,843	2.1
Admission - new referral	5.0	2,261	2.2	2.8	4,878	2.0
Admission from other treatment setting	4.2	2,565	2.0	2.3	2,178	2.1
Admission - other	4.0	425	1.9	2.7	1,636	2.2
Review - 3-month review	3.3	850	2.2	2.0	19,572	1.9
Review - other	3.3	314	2.2	2.4	2,475	2.1
Discharge - no further care	1.5	227	1.6	1.1	2,131	1.5
Discharge to change of treatment setting	2.0	3,779	1.8	4.0	1,729	2.3
Discharge - lost to care	3.2	41	2.4	2.3	137	2.0
Death	7.0	1		3.3	4	4.0
Discharge following brief episode of care	1.5	38	1.4	1.9	18	3.0
Discharge - other	1.8	288	1.8	1.6	444	1.9
Total	3.4	10,815	2.3	2.3	37,045	2.0

(1) HoNOS item score 2 or more. Measure out of the 12 items

Figure 3: Mean Number of Clinically Significant¹ Items, by Reason for Collection and Setting, HoNOS, Selected DHBs



Note: when there is under 30 observations the data is excluded from this graph.

(1) HoNOS item score 2 or more. Measure out of the 12 items

b) by Team at admission (Specific for DHB)

Table 10: Average Number of Clinically Significant¹ items by Team, HoNOS, DHB

Team	Mean	N	Std. Deviation
Team A			
Team B			
Team C			
....			

(1) HoNOS item score 2 or more. Measure out of the 12 items

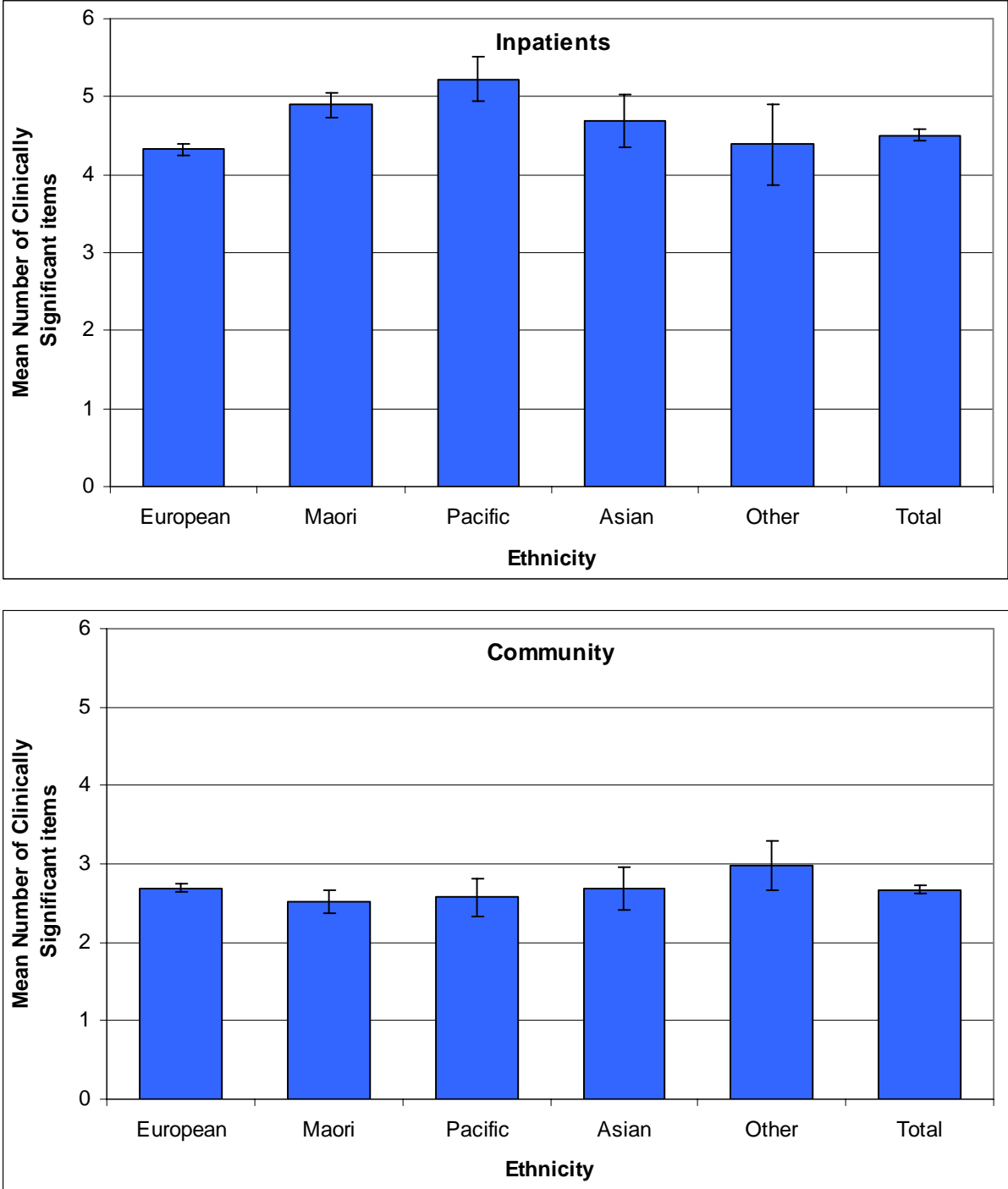
c) by Ethnicity and Service Setting at admission

Table 11: Mean Number of Clinically Significant¹ items at Admission, by Ethnicity and Setting, HoNOS, Selected DHBs

Ethnicity Grouped	Inpatient			Community		
	Mean	N	Std. Deviation	Mean	N	Std. Deviation
European	4.3	3,548	2.1	2.7	6,104	2.0
Maori	4.9	1,070	2.3	2.5	1,252	2.3
Pacific	5.2	311	2.3	2.6	470	2.3
Asian	4.7	158	1.9	2.7	277	2.0
Other	4.4	95	2.2	3.0	239	2.1
Total	4.5	5,182	2.1	2.7	8,342	2.1

(1) HoNOS item score 2 or more. Measure out of the 12 items

Figure 4: Mean Number of Clinically Significant¹ items at Admission, by Ethnicity and Setting, HoNOS, Selected DHBs



(1) HoNOS item score 2 or more. Measure out of the 12 items

3. Percentage with any item Clinically Significant for the five sub-scores

HoNOS/HoNOS65+	Items	HoNOSCA	Items
Behaviour	1, 3	Behavioural	1, 2, 3, 4
Impairment	4, 5	Impairment	5, 6
Delusions/Hallucinations	6	Symptomatic	7, 8, 9
Depression	2, 7, 8, 9	Social	10, 11, 12, 13
Social	9*, 10, 11, 12	Information	14, 15

* Item 9 appears in both Depression and Social

Rationale: The five sub-scores enable identification of utilisation and targeting of resources which helps to identify plans and supports needed.

a) by Reason for Collection and Service Setting

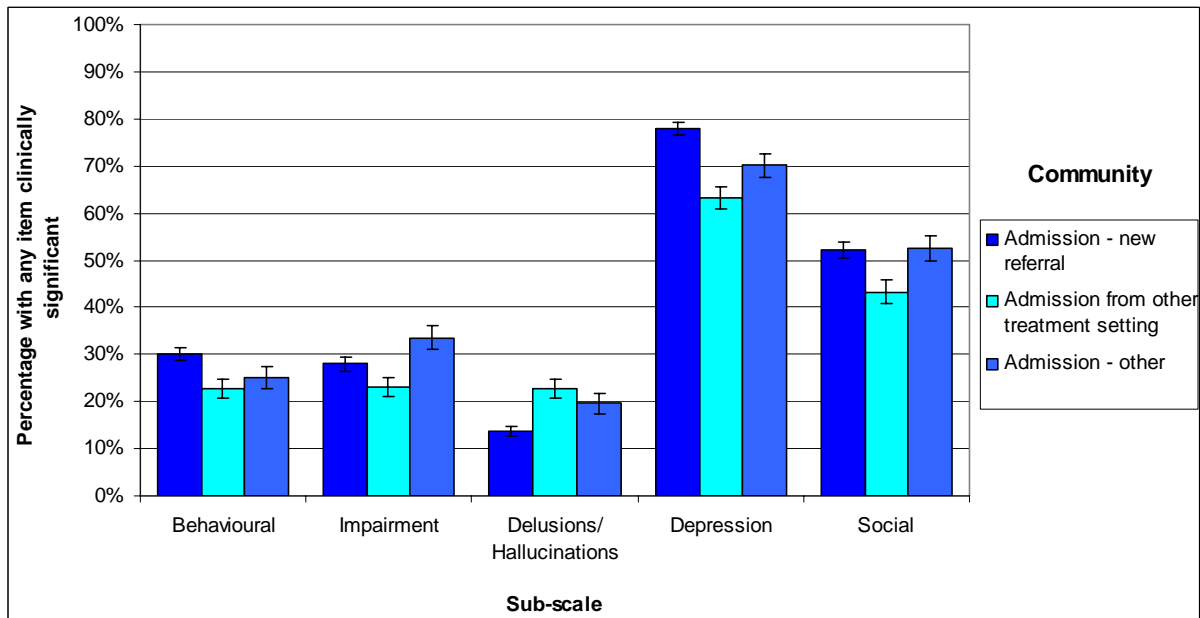
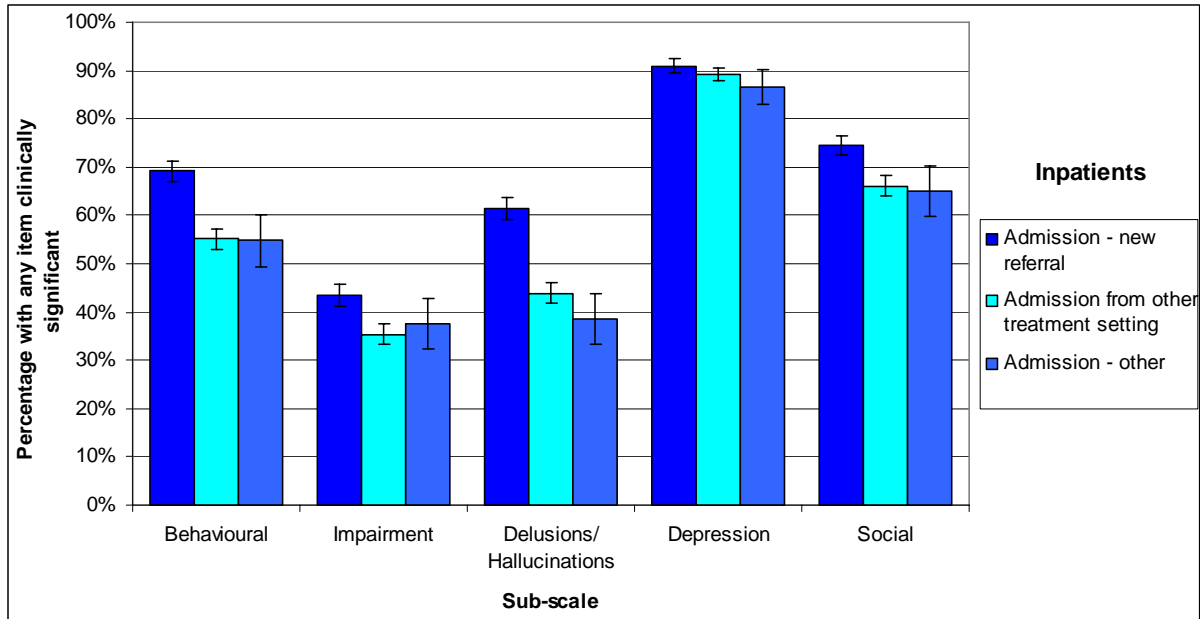
Table 12: Percentage with any item Clinically Significant¹ for the five sub-scores, by Reason for Collection and Setting, HoNOS, Selected DHBs

Reason for Collection	Percentage with any item clinically significant					Number
	Behavioural	Impairment	Delusions/ Hallucinations	Depression	Social	
Inpatient						
Assessment only	77%	42%	50%	92%	77%	26
Admission - new referral	69%	43%	62%	91%	75%	2,261
Admission from other treatment setting	55%	35%	44%	89%	66%	2,565
Admission - other	55%	38%	38%	87%	65%	425
Review - 3-month review	38%	39%	48%	72%	68%	850
Review - other	41%	44%	49%	73%	66%	314
Discharge - no further care	30%	17%	11%	46%	26%	227
Discharge to change of treatment setting	22%	22%	25%	58%	42%	3,779
Discharge - lost to care	51%	22%	39%	66%	54%	41
Death	100%	100%	100%	100%	100%	1
Discharge following brief episode of care	13%	8%	13%	66%	24%	38
Discharge - other	19%	20%	18%	55%	39%	288
Total	43%	32%	40%	75%	58%	10,815
Community						
Assessment only	38%	21%	7%	77%	50%	1,843
Admission - new referral	30%	28%	14%	78%	52%	4,878
Admission from other treatment setting	23%	23%	23%	63%	43%	2,178
Admission - other	25%	34%	20%	70%	53%	1,636
Review - 3-month review	18%	29%	19%	58%	41%	19,572
Review - other	22%	28%	19%	64%	46%	2,475
Discharge - no further care	12%	14%	2%	39%	23%	2,131
Discharge to change of treatment setting	48%	37%	39%	85%	64%	1,729
Discharge - lost to care	43%	17%	4%	65%	47%	137
Death	25%	50%	0%	50%	25%	4
Discharge following brief episode of care	28%	22%	6%	33%	33%	18
Discharge - other	18%	17%	10%	51%	34%	444
Total	23%	28%	18%	63%	44%	37,045

(1) If any item which makes up the sub-scale has a score of 2 or more then it is counted as clinically significant.

Below are some examples of graphs looking at admissions only. Graphs could also be done for review and discharges.

Figure 5: Percentage with any item Clinically Significant¹ for the five sub-scores, by Admission Status and Setting, HoNOS, Selected DHBs



(1) If any item which makes up the sub-scale has a score of 2 or more then it is counted as clinically significant.

b) by Team at admission (Specific for DHB)

Table 13: Table: Percentage with any item Clinically Significant¹ for the five sub-scores at admission, by Team, HoNOS, DHBs

Team	Percentage with any item clinically significant					Number
	Behavioural	Impairment	Delusions/Hallucinations	Depression	Social	
Team A						
Team B						
...						

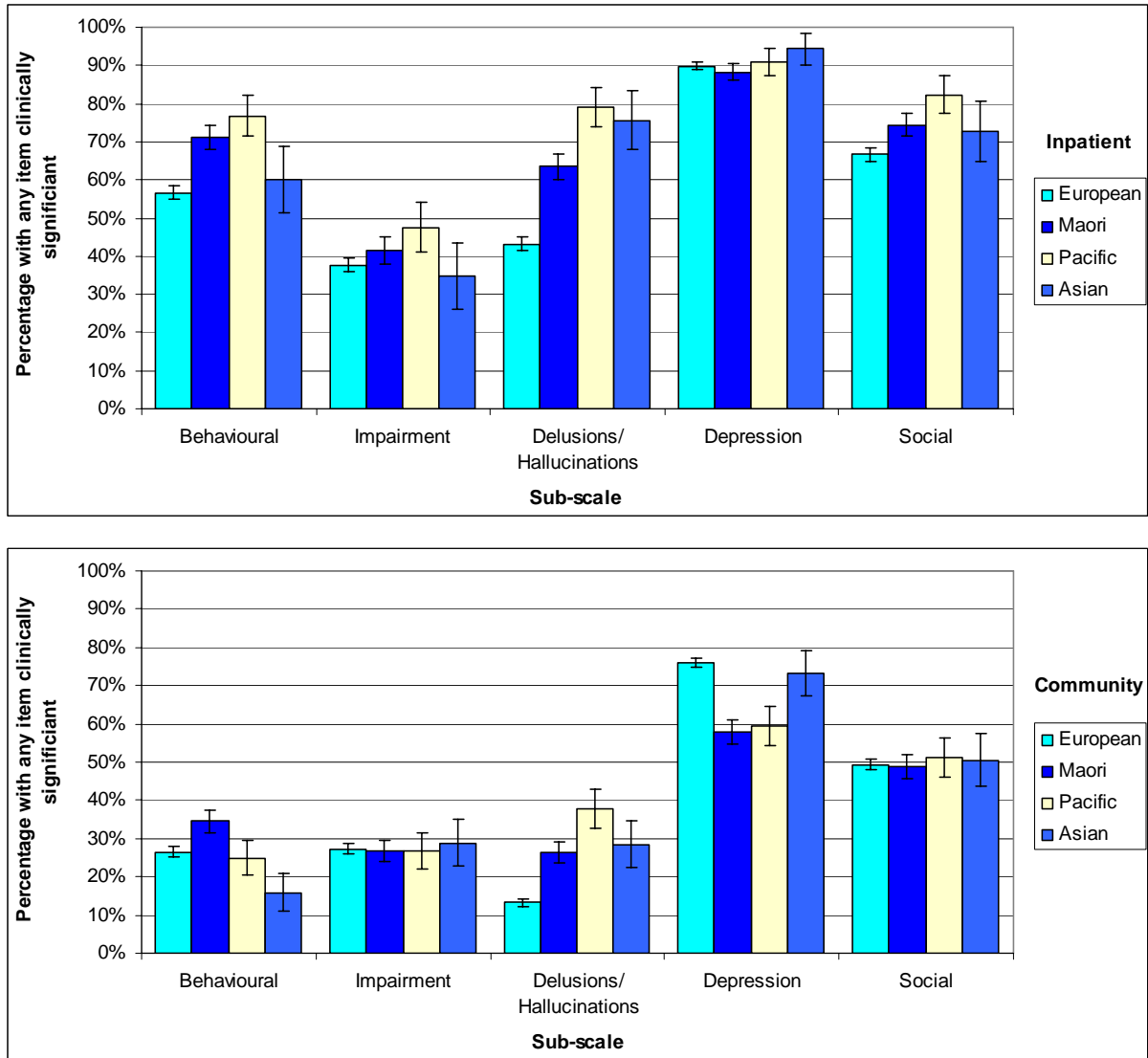
c) by Ethnicity and Service Setting at admission

Table 14: Percentage with any item Clinically Significant¹ for the five sub-scores at admission, by Ethnicity and Setting, HoNOS, Selected DHBs

Ethnicity	Percentage with any item clinically significant					Number
	Behavioural	Impairment	Delusions/ Hallucinations	Depression	Social	
Inpatient						
European	57%	38%	43%	90%	67%	3,548
Maori	71%	41%	63%	88%	74%	1,070
Pacific	77%	48%	79%	91%	82%	311
Asian	60%	35%	76%	94%	73%	158
Other	61%	40%	56%	89%	71%	95
Total	61%	39%	51%	90%	69%	5,182
Community						
European	27%	27%	13%	76%	49%	6,104
Maori	35%	27%	26%	58%	49%	1,252
Pacific	25%	27%	38%	59%	51%	470
Asian	16%	29%	28%	73%	51%	277
Other	29%	33%	13%	75%	55%	239
Total	27%	27%	17%	72%	50%	8,342

(1) If any item which makes up the sub-scale has a score of 2 or more then it is counted as clinically significant.

Figure 6: Percentage with any item Clinically Significant¹ for the five sub-scores at admission, by Ethnicity and Setting, HoNOS, Selected DHBs



(1) If any item which makes up the sub-scale has a score of 2 or more then it is counted as clinically significant.

4. Percentage Clinically Significant by Item

Rationale: Gives an indication of which items have the highest percentage of those which are of clinical significance. This will help pinpoint particular items of importance. For example at team level at admission it can help to pinpoint the mix of service users and what issues they have, helping to inform workforce composition.

a) by Reason for Collection and Service Setting

Table 15: Percentage of Service Users with a Clinically Significant¹ item of HoNOS, by Reason for Collection and Setting, HoNOS, Selected DHBs

Reason for Collection	Item 1	Item 2	Item 3	Item 4	Item 5	Item 6	Item 7	Item 8	Item 9	Item 10	Item 11	Item 12	Number
	AGR	SH	AOD	COG	PHY	Del/HAL	DEP	OTH	REL	ADL	LIV	OCC	
Inpatient													
Assessment only	64%	23%	38%	27%	24%	50%	46%	46%	62%	42%	20%	42%	26
Admission - new referral	53%	28%	44%	30%	21%	62%	42%	69%	63%	39%	23%	28%	2,257
Admission from other treatment setting	37%	36%	32%	19%	24%	44%	52%	60%	54%	34%	17%	19%	2,558
Admission - other	32%	28%	36%	21%	25%	38%	53%	62%	53%	30%	16%	19%	425
Review - 3-month review	28%	6%	15%	24%	24%	48%	17%	43%	57%	42%	11%	13%	850
Review - other	32%	6%	18%	26%	28%	49%	18%	46%	55%	35%	8%	12%	314
Discharge - no further care	4%	4%	28%	8%	12%	11%	19%	29%	22%	7%	5%	6%	227
Discharge to change of treatment setting	8%	9%	17%	8%	16%	25%	24%	31%	34%	12%	9%	9%	3,778
Discharge - lost to care	32%	5%	40%	7%	15%	39%	27%	32%	53%	22%	32%	26%	41
Death	100%	0%	0%	100%	100%	100%	100%	0%	100%	100%	0%	0%	1
Discharge following brief episode of care	3%	26%	13%	8%	3%	13%	32%	26%	21%	3%	0%	0%	38
Discharge - other	8%	7%	13%	8%	15%	18%	24%	29%	31%	9%	10%	10%	288
Total	28%	20%	27%	18%	20%	40%	35%	48%	48%	26%	14%	16%	10,799
Community													
Assessment only	18%	21%	28%	9%	15%	7%	48%	45%	42%	18%	10%	20%	1,840
Admission - new referral	12%	10%	24%	11%	21%	14%	52%	57%	43%	19%	8%	15%	4,872
Admission from other treatment setting	11%	14%	16%	9%	17%	23%	35%	38%	35%	18%	9%	10%	2,177
Admission - other	10%	7%	20%	15%	24%	20%	38%	51%	42%	23%	10%	15%	1,635
Review - 3-month review	5%	3%	15%	9%	24%	19%	26%	39%	32%	18%	6%	10%	19,550
Review - other	9%	7%	17%	9%	23%	19%	36%	46%	36%	19%	8%	14%	2,475
Discharge - no further care	3%	2%	11%	3%	12%	2%	15%	27%	20%	6%	3%	6%	2,128
Discharge to change of treatment setting	31%	32%	28%	18%	25%	39%	50%	63%	54%	33%	17%	15%	1,725
Discharge - lost to care	16%	9%	36%	4%	13%	4%	38%	44%	40%	10%	10%	14%	136
Death	25%	50%	25%	25%	25%	0%	50%	25%	25%	25%	25%	25%	4
Discharge following brief episode of care	11%	6%	22%	6%	17%	6%	17%	35%	17%	22%	17%	17%	18
Discharge - other	7%	3%	15%	5%	15%	10%	21%	31%	30%	10%	6%	8%	444
Total	9%	7%	17%	10%	22%	18%	33%	43%	35%	18%	7%	11%	36,991

(1) Item has a score of 2 or more.

Examples of graphs look at admissions only. Graphs could also be done for review and discharges. Figures on next portrait page.

b) by Team at admission (Specific for DHB)

Table 16: Percentage of Service Users with a Clinically Significant¹ item of HoNOS at admission, by Team, HoNOS, DHBs

Team	Item 1	Item 2	Item 3	Item 4	Item 5	Item 6	Item 7	Item 8	Item 9	Item 10	Item 11	Item 12	Number
	AGR	SH	AOD	COG	PHY	Del/HAL	DEP	OTH	REL	ADL	LIV	OCC	
Team A													
Team B													
....													

(1) Item has a score of 2 or more.

c) by Ethnicity and Service Setting at admission

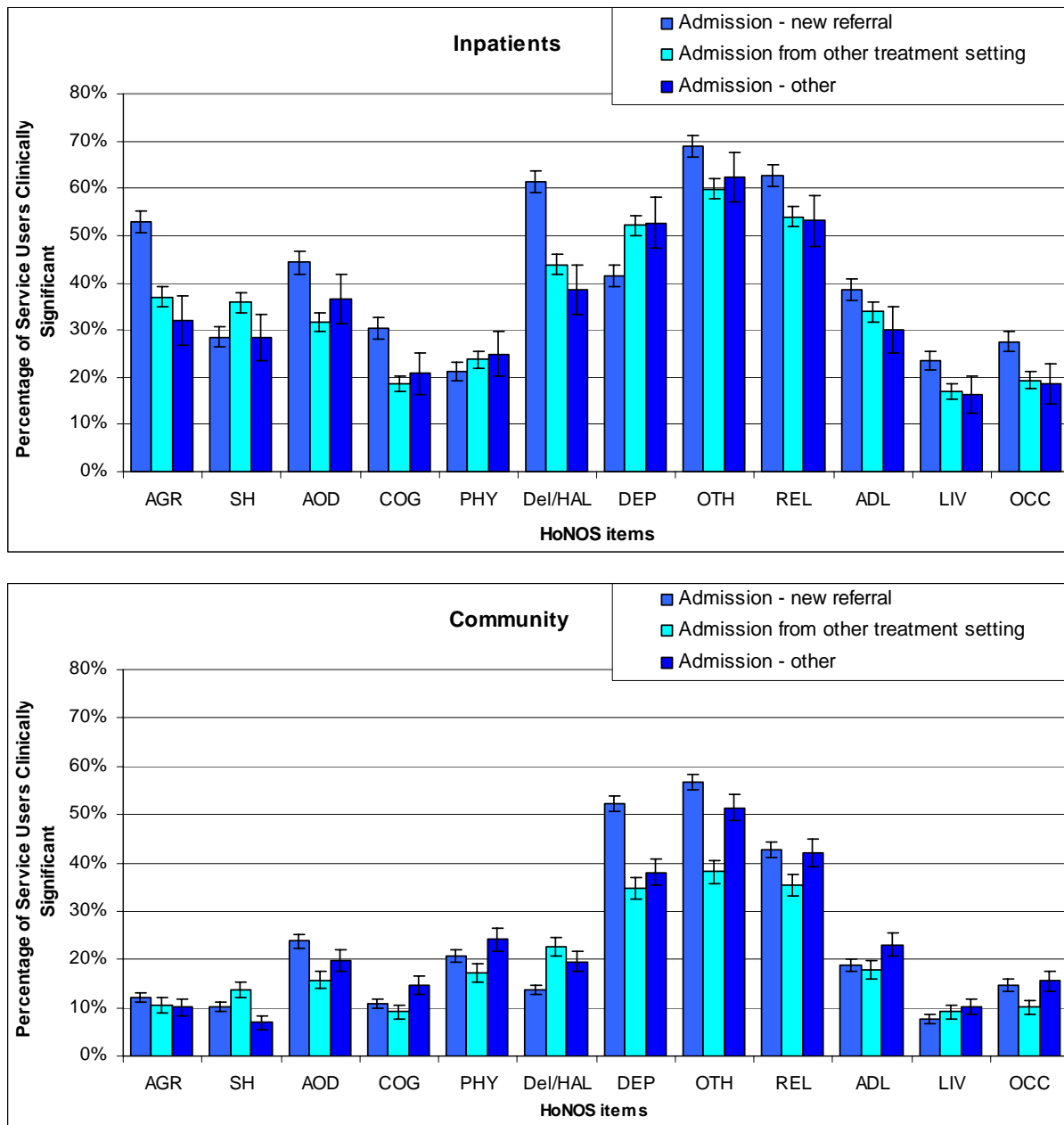
Table 17: Percentage of Service Users with a Clinically Significant¹ item of HoNOS at admission, by Ethnicity and Setting, HoNOS, Selected DHBs

Ethnicity Grouped	Item 1	Item 2	Item 3	Item 4	Item 5	Item 6	Item 7	Item 8	Item 9	Item 10	Item 11	Item 12	Number
	AGR	SH	AOD	COG	PHY	Del/HAL	DEP	OTH	REL	ADL	LIV	OCC	
Inpatient													
European	38%	36%	34%	21%	24%	43%	54%	64%	55%	34%	17%	19%	3,538
Maori	51%	25%	51%	29%	21%	63%	36%	63%	63%	37%	26%	30%	1,069
Pacific	65%	17%	45%	35%	21%	79%	23%	69%	68%	45%	28%	33%	311
Asian	54%	27%	17%	23%	15%	76%	38%	74%	54%	43%	24%	28%	158
Other	46%	30%	34%	29%	18%	56%	43%	63%	51%	30%	24%	23%	95
Total	43%	32%	37%	24%	23%	51%	48%	64%	58%	35%	20%	23%	5,168
Community													
European	11%	12%	20%	10%	21%	13%	50%	55%	41%	19%	8%	12%	6,097
Maori	14%	7%	28%	12%	18%	26%	27%	34%	38%	20%	12%	15%	1,250
Pacific	11%	4%	20%	14%	19%	38%	26%	34%	39%	22%	12%	18%	470
Asian	11%	10%	8%	9%	24%	28%	44%	55%	42%	15%	7%	16%	277
Other	17%	10%	20%	18%	21%	13%	52%	58%	41%	22%	9%	18%	239
Total	11%	10%	21%	11%	20%	17%	45%	51%	40%	19%	9%	13%	8,329

(1) Item has a score of 2 or more.

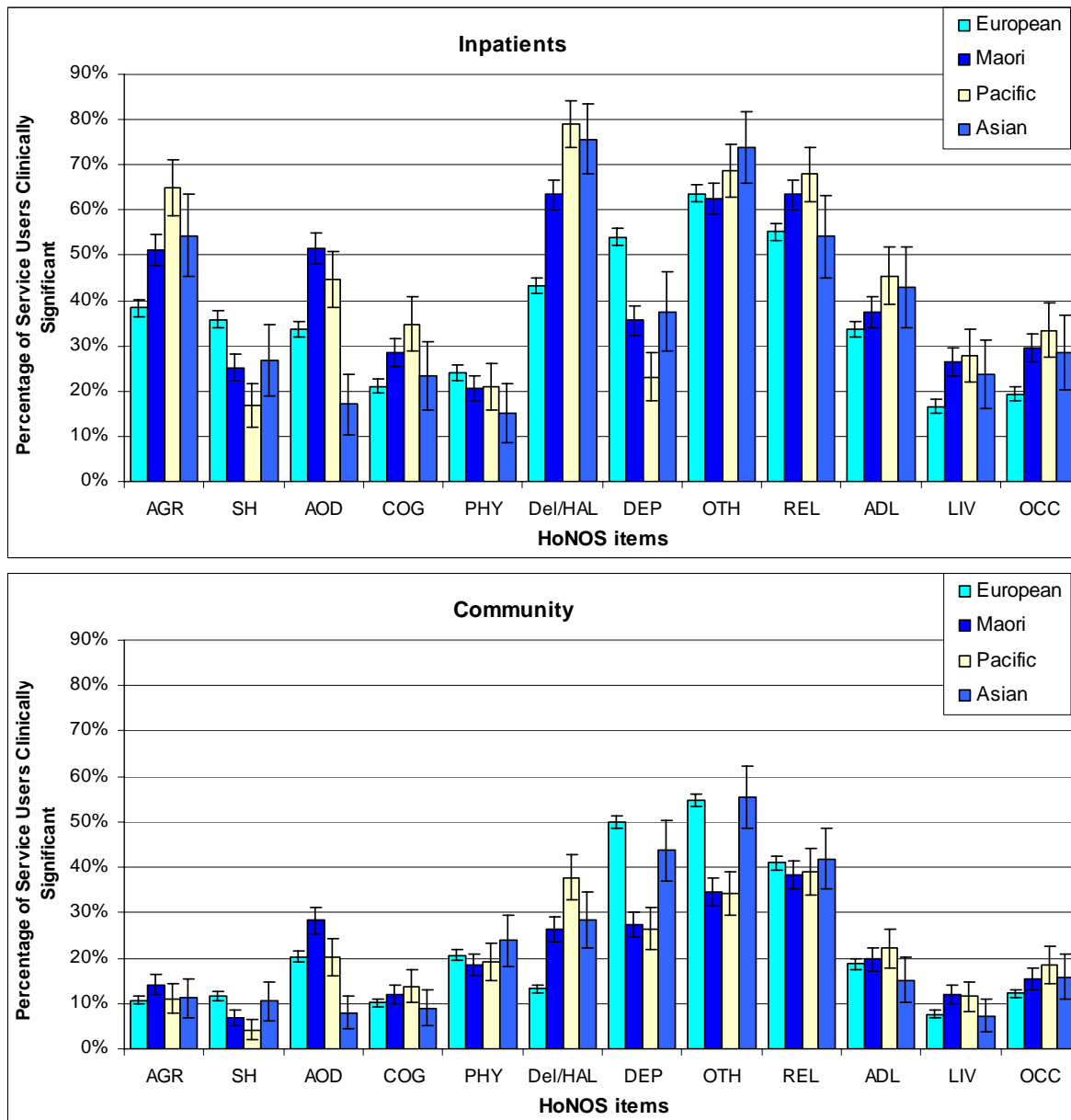
Figures on portrait page

Figure 7: Percentage of Service Users with a Clinically Significant¹ item for each item, by Admission Status and Setting, HoNOS, Selected DHBs



(1) Item has a score of 2 or more.

Figure 8: Percentage of Service Users with a Clinically Significant¹ item for Admission, by Ethnicity and Setting, HoNOS, Selected DHBs



(1) Item has a score of 2 or more.

5. Index of Severity

Severity	Description	Condition
0	Sub-clinical	All items rated <2
1	Mild	At least one item >1 and all items <3
2	Moderate	At least one item >=3
3	Severe	At least two items >=3

HoNOS/HoNOS65+ – Use first 10 items
 HoNOSCA – Use first 13 items

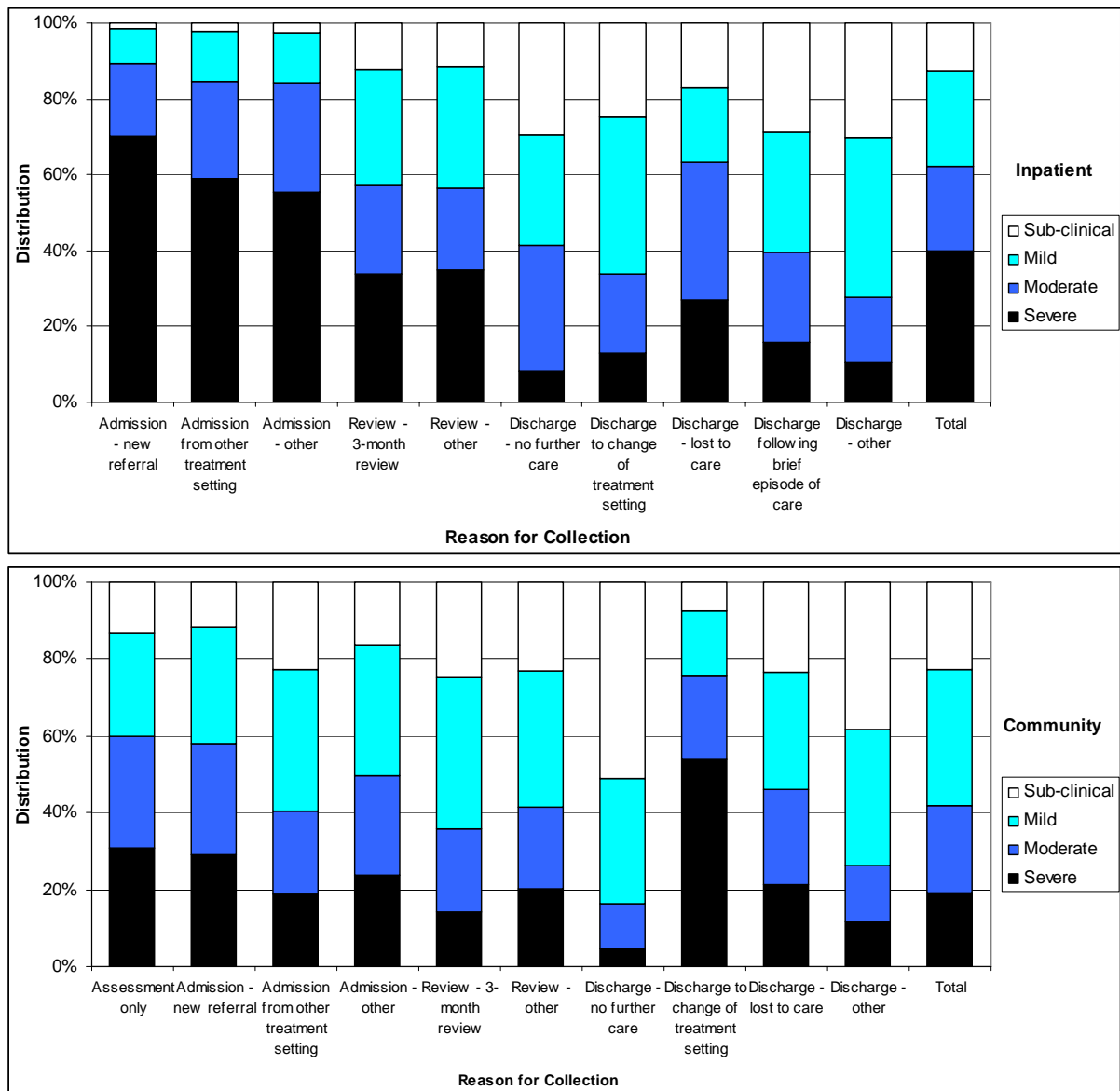
Rationale: This is a concept that has been used in the United Kingdom (Lelliott, P) and Australia (Morris –Yates, A, Trauer, T) as another way to analyse HoNOS information. For HoNOS/HoNOS65+ only the first 10 items are used, and for HoNOSCA only the first 13 items are used . By looking at these items and grouping these by condition symptom severity becomes evident.

a) by Reason for Collection and Service Setting

Table 18: Distribution of Index of Severity, by Reason for Collection and Setting, HoNOS, Selected DHBs

Reason for Collection	Number					Percentage of Total				
	Sub-clinical	Mild	Moderate	Severe	Total	Sub-clinical	Mild	Moderate	Severe	Total
Inpatient										
Assessment only	0	5	2	19	26	0	19	8	73	100
Admission - new referral	32	215	429	1,585	2,261	1	10	19	70	100
Admission from other treatment setting	57	340	652	1,516	2,565	2	13	25	59	100
Admission - other	11	57	122	235	425	3	13	29	55	100
Review - 3-month review	105	258	200	287	850	12	30	24	34	100
Review - other	36	101	68	109	314	11	32	22	35	100
Discharge - no further care	67	66	75	19	227	30	29	33	8	100
Discharge to change of treatment setting	938	1,561	789	491	3,779	25	41	21	13	100
Discharge - lost to care	7	8	15	11	41	17	20	37	27	100
Death	0	0	0	1	1	0	0	0	100	100
Discharge following brief episode of care	11	12	9	6	38	29	32	24	16	100
Discharge - other	87	121	50	30	288	30	42	17	10	100
Total	1,351	2,744	2,411	4,309	10,815	12	25	22	40	100
Community										
Assessment only	243	496	535	569	1,843	13	27	29	31	100
Admission - new referral	578	1,479	1,399	1,422	4,878	12	30	29	29	100
Admission from other treatment setting	497	801	471	409	2,178	23	37	22	19	100
Admission - other	269	554	423	390	1,636	16	34	26	24	100
Review - 3-month review	4,887	7,668	4,269	2,748	19,572	25	39	22	14	100
Review - other	569	882	527	497	2,475	23	36	21	20	100
Discharge - no further care	1,089	691	251	100	2,131	51	32	12	5	100
Discharge to change of treatment setting	130	290	376	933	1,729	8	17	22	54	100
Discharge - lost to care	32	42	34	29	137	23	31	25	21	100
Death	1	1	1	1	4	25	25	25	25	100
Discharge following brief episode of care	8	4	3	3	18	44	22	17	17	100
Discharge - other	170	158	64	52	444	38	36	14	12	100
Total	8,473	13,066	8,353	7,153	37,045	23	35	23	19	100

Figure 9: Distribution of Index of Severity, by Reason for Collection and Setting, HoNOS, Selected DHBs



Note: when there is under 30 observations the data is excluded from this graph.

b) by Team at admission (Specific for DHB)

Table 19: Distribution of Index of Severity, by Team, HoNOS, DHBs

Team	Number					Percentage of Total				
	Sub-clinical	Mild	Moderate	Severe	Total	Sub-clinical	Mild	Moderate	Severe	Total
Team A										
Team B										
...										

c) by Ethnicity and Service Setting at admission

Table 20: Distribution of Index of Severity, by Ethnicity and Setting, HoNOS, Selected DHBs

Ethnicity Grouped	Number					Percentage of Total				
	Sub-clinical	Mild	Moderate	Severe	Total	Sub-clinical	Mild	Moderate	Severe	Total
Inpatient										
European	61	399	882	2,206	3,548	2	11	25	62	100
Maori	29	156	207	678	1,070	3	15	19	63	100
Pacific	4	27	56	224	311	1	9	18	72	100
Asian	2	12	28	116	158	1	8	18	73	100
Other	3	12	18	62	95	3	13	19	65	100
Total	99	606	1,191	3,286	5,182	2	12	23	63	100
Community										
European	852	1,905	1,680	1,667	6,104	14	31	28	27	100
Maori	284	442	290	236	1,252	23	35	23	19	100
Pacific	110	185	96	79	470	23	39	20	17	100
Asian	42	110	62	63	277	15	40	22	23	100
Other	32	65	68	74	239	13	27	28	31	100
Total	1,320	2,707	2,196	2,119	8,342	16	32	26	25	100

Figure 10: Distribution of Index of Severity, by Ethnicity and Setting, HoNOS, Selected DHBs

