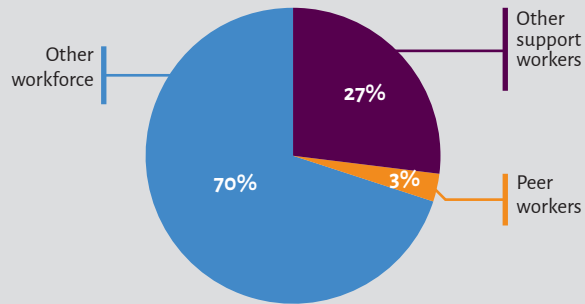


NGO peer support workers

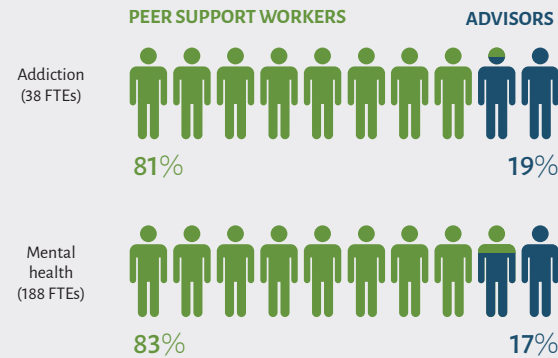
(consumer, and family and whānau) Results of 2014 survey of 169 NGOs and 20 DHBs

Peer workers were 3% of the total reported MHA workforce*



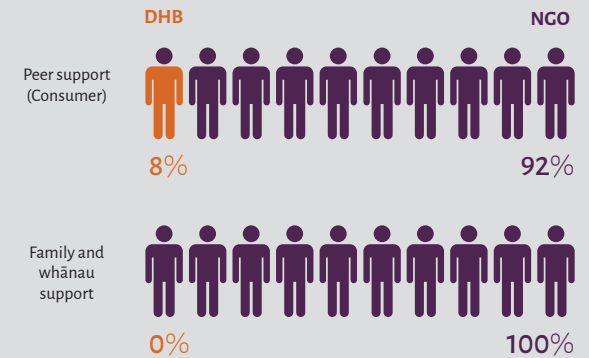
* Total reported workforce was 8,929 FTEs
Peer workers include peer support workers, consumer advisors, and family and whānau advisors (225 FTEs)

Peer workers are mostly peer support workers



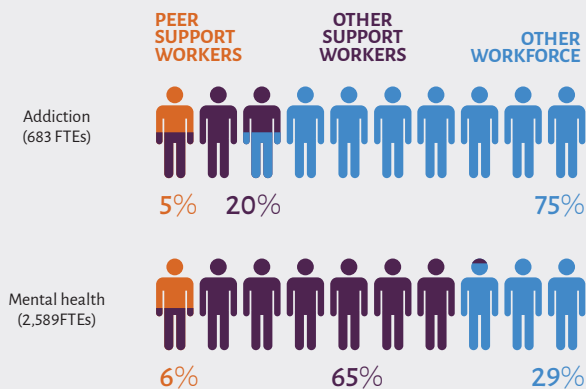
Peer workers included:
· Peer support workers (186 FTEs)
· Advisor roles (39 FTEs)

NGOs employed most peer support workers

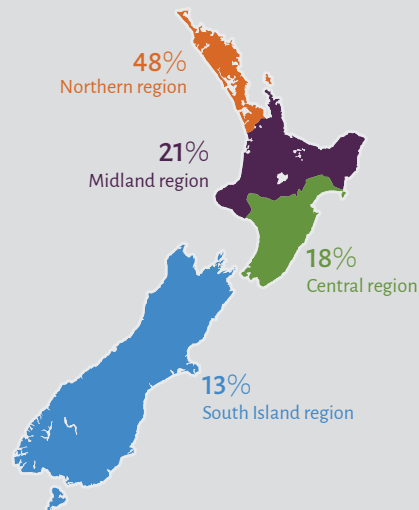


DHBs employed 14 FTEs in peer support (consumer) roles
NGO peer support workers:
· Peer support (consumer) roles (172 FTEs)
· Family and whānau support roles (15 FTEs)

Peer support workers are 5% to 6% of the NGO mental health and addiction workforce



Distribution of NGO peer support workers by region (187 FTEs)



NGO peer support workers are mostly employed by mental health services

