



Te Pou and Early Intervention in Psychosis



Te Pou o te Whakaaro Nui

National centre of evidence based workforce development for the **mental health, addiction and disability** sectors in New Zealand.



Work in the EI space

- Team at Te Pou
- PRIMHD
- Leadership Day in 2016
- Loomio - its for you
- Work with NZEIPS and MOH on strategic plan development
- Orygen elearning modules



Orygen e-learning modules

- Survey results
 - 20% response rate
 - Feedback on the content was generally positive.
 - The primary challenges to completion was a lack of time
 - There was a general increase in knowledge/skills/understanding/awareness across all the modules.

- *I am really enjoying what I am learning - it is making me passionate about this topic.*
- *I have done a presentation to my team on this topic (Co-occurring conditions in Early Psychosis: Borderline Personality disorder), using some of the material from the module, discussing specific case examples that our team have managed, and discussing issues that arose in the cases.*





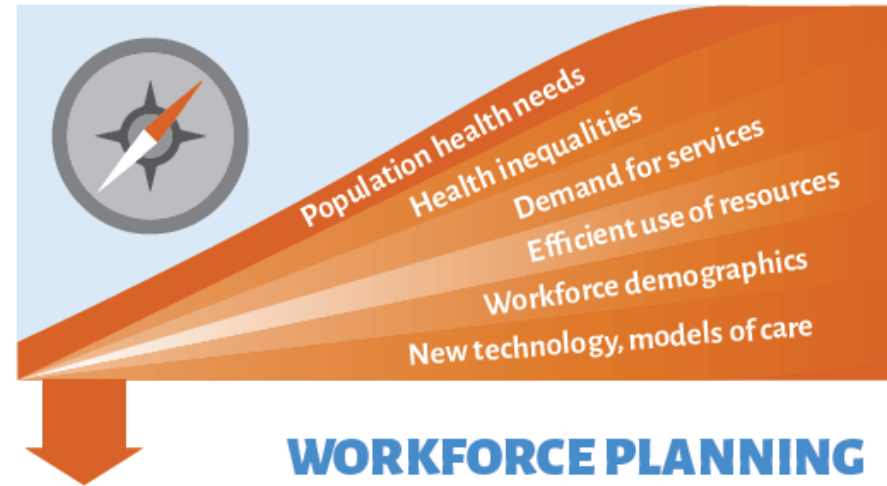
Workforce planning & development

Getting it right

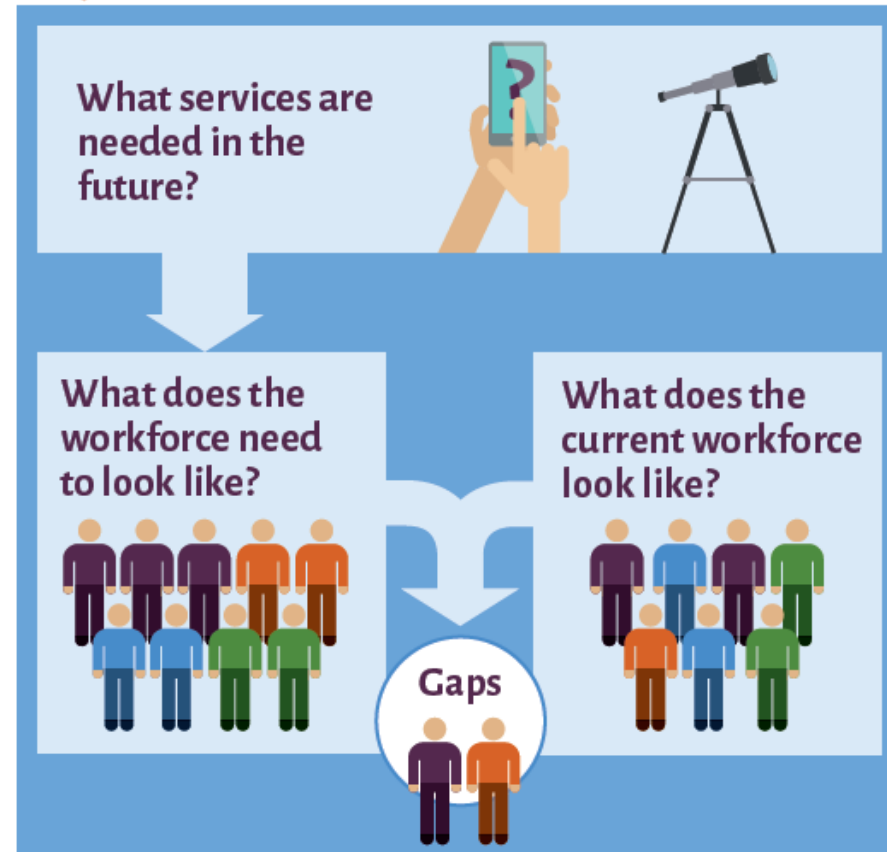


Workforce planning

FUTURE DIRECTIONS



WORKFORCE PLANNING



Workforce development



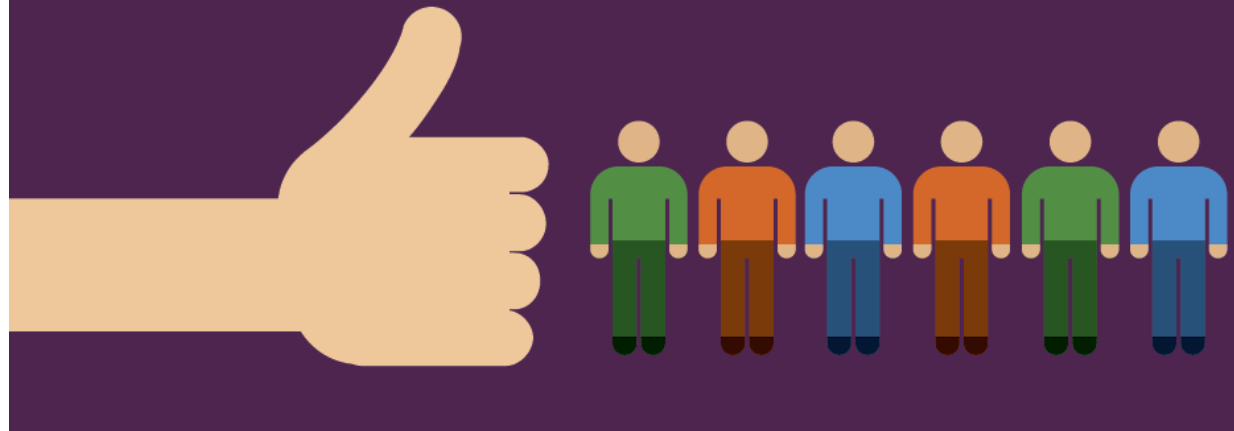
Guiding principles

- People-centred
- Equitable
- Strategic
- Stakeholders
- Evidence-informed
- Whole-of-system
- Multi-level
- Sustainable
- Evaluated

Workforce action plan covering the five domains of workforce development

Outcomes

Right number of **people**
with the right **skills**
in the right **place**
at the right **time**
with the right **attitude**
doing the right **work**
at the right **cost**
with the right work **output**



Getting it right

A series of workforce planning and development resources

Workforce planning guide

Getting the right people and skills in the future workforce

Te Pou o te Whakaaro Nui

Getting it right

A series of workforce planning and development resources

Developing your workforce

An overview of a systems approach to workforce development

Te Pou o te Whakaaro Nui

Getting it right

A series of workforce planning and development resources

Training your workforce

Getting the most out of training and development

Te Pou o te Whakaaro Nui