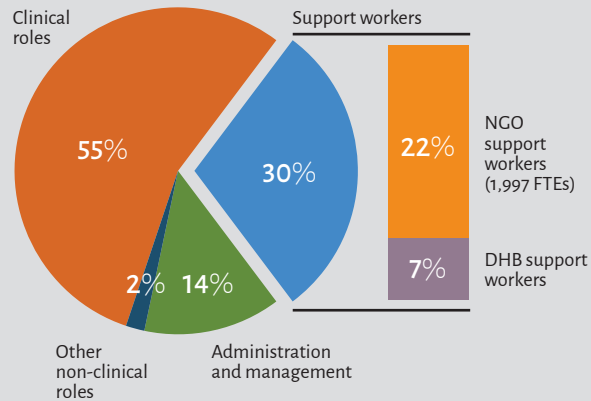


NGO support workers in Vote Health funded adult mental health and addiction services

Results of 2014 survey of 169 NGOs and 20 DHBs

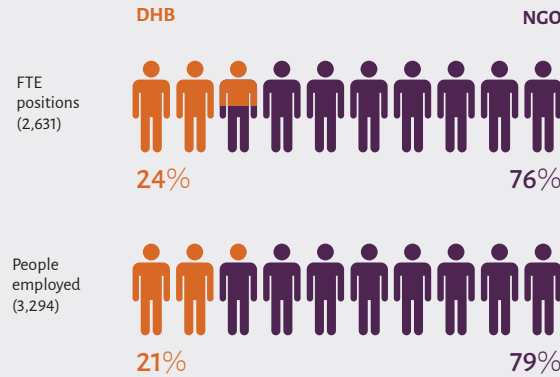


Support workers were nearly one-third of the total reported workforce*



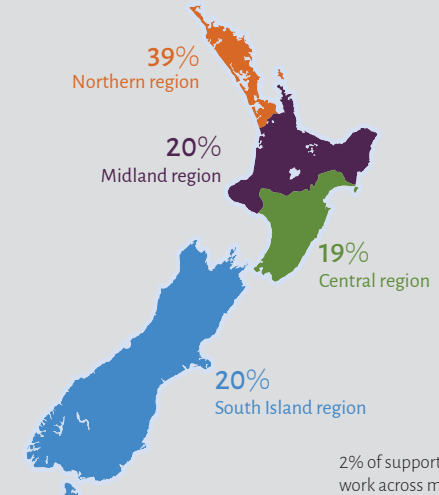
*Total reported workforce was 8,929 FTEs

NGOs employed most* of the support workforce

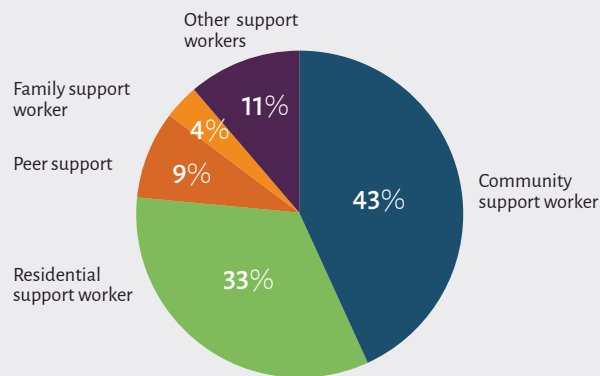


*NGOs employed 2,600 people in 1,997 FTEs

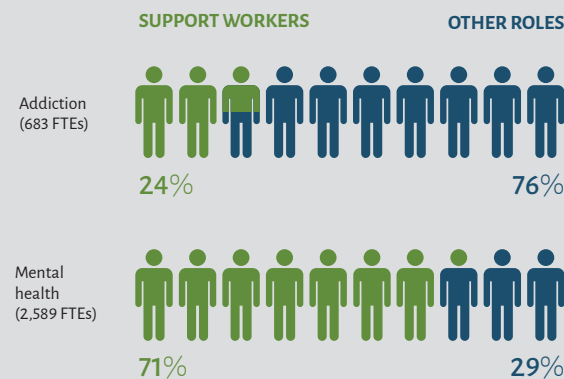
Distribution of the NGO support workforce by region (1,997 FTEs)



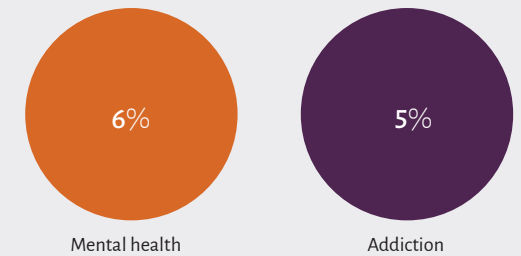
Over three-quarters of NGO support worker roles were community or residential support workers



NGO mental health services were more likely to employ support workers than addiction services



Around 6% of the total NGO mental health and addiction workforce were peer support workers



*Peer support workers include 172 FTE consumer peer workers and 15 FTE family and whānau peer workers.